

Series 500 P2CS

Linear Shaker



VGS Configuration Optional

Simple, rugged design

Introducing the 500 P2CS, FSI's latest advance in high "G" force, high volume linear motion shakers. FSI has designed this unit to achieve optimum performance. Even in the most challenging applications, the 500 P2CS achieves consistently high throughput. Processing rates vary with slurry content, percent solids and viscosity.

Exceptional reliability

Simplicity is the essence of every FSI design. Permanently sealed vibrators make lubrication systems totally unnecessary. Low 80-dB motor vibration eliminates the need for hearing protection. Each of the unit's three pre-tensioned screen panels can be installed or replaced independently of each other. Replacement takes less than three minutes and requires only a light- to medium-weight hammer.

Lowest maintenance cost

Simplicity pays off. FSI equipment have the lowest operational and maintenance costs in the industry. Routine maintenance is extremely minimal. Simple visual checks of screen panels, deck rubbers, inflation of air spring assemblies, and quarterly torque checks of the vibrator motor bolts are all that is required. Fluid Systems, Inc. keeps you on-line for decades of trouble-free performance. It's that simple!

The FSI Difference

- **25.3 ft² [2.35 m²] screening area**
- **Simple Design**
- **Rugged and Reliable**
- **High performance**
- **Low maintenance**
- **Quick screen panel changes**
- **Small footprint**
- **No lubrication**
- **Low noise**



www.FSIshakers.com

Houston Office

6718 Northwinds Dr.
Houston, TX 77041
832-467-9898
FAX: 832-467-9897

New Orleans Office

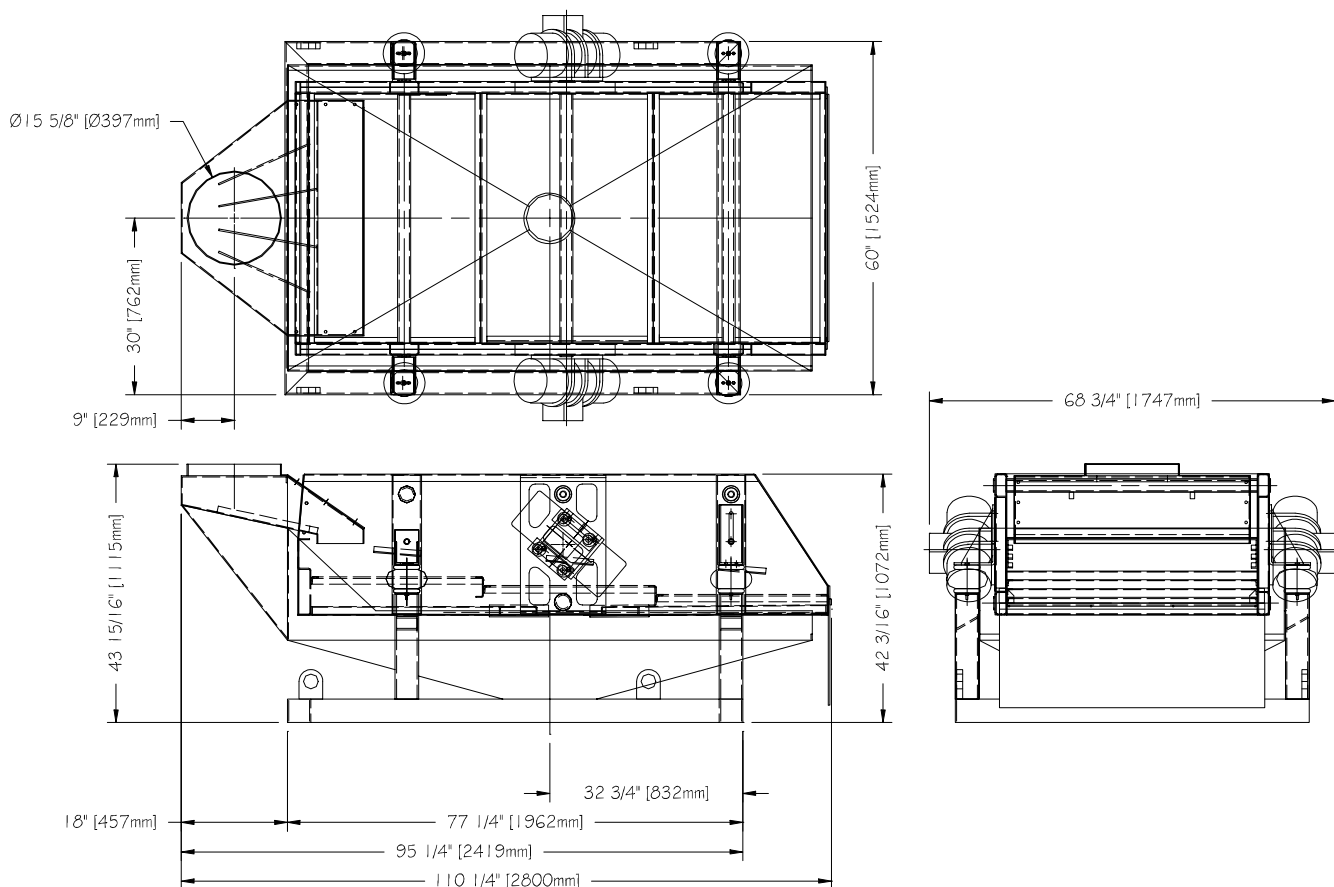
2808 Engineers Road
Belle Chasse, LA 70037
504-393-1804
FAX: 504-393-5166

Series 500 P2CS

Linear Shaker

General Specifications

Series:	500
Model:	P2CS
Motors:	Two each 1800, 1500 or 1200 rpm exp. proof or non-exp. proof available
Bearings:	Permanently sealed and lubricated
Motion:	Linear, 0.13" A (1800), 0.156" A (1500), 0.23" A (1200), 5.0 "G"
Deck adjustment:	Adjustable 0° to 5° uphill
Screens:	Three each 29" x 42" pretensioned panels with <i>Wedgelok</i> fasteners
Screening area:	25.3 ft ² [2.35 m ²]
Overall dimensions:	110 1/4" L x 68 3/4" W x 44" H 2800mm x 1747mm x 1115mm



Fluid Systems, Inc.

Screen Sales, Manufacturing & Engineering

6718 Northwinds Drive • Houston, TX 77041 • TEL 832-467-9898 • FAX 832-467-9897

Sales & Service

2808 Engineers Road • Belle Chasse, LA 70037 • TEL 504-393-1804 • FAX 504-393-5166

sales@fsishakers.com • engineering@fsishakers.com • screens@fsishakers.com • service@fsishakers.com