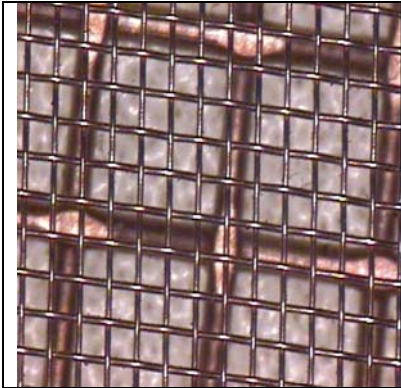




## SCREEN MESH STYLES

### MFX/FMS SERIES

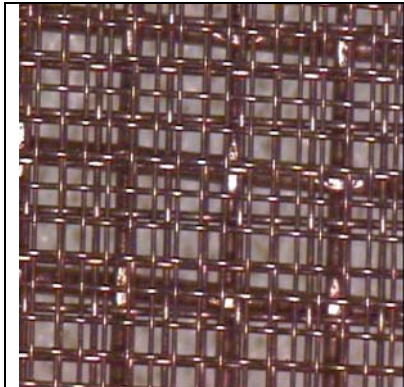


**MFX Series** screens are general duty screen panels. This series of screens utilize tensile bolting cloth and are available in mesh sizes from 6 to 400. As with all Fluid Systems, Inc. O.E.M. screen panels, each screen is factory tensioned to eliminate improper tensioning in the field.

**FMS series** screens utilize the same cloth as MF screens with the addition of a perforated support plate and are available in mesh sizes from 10 to 400. The support plate offers extra support for heavy loading and reparability of damaged or worn sections of the screen panel. As with all Fluid Systems, Inc. O.E.M. screen panels, each screen is factory tensioned to eliminate improper tensioning in the field.

API RP 13C Screen Data			
Fluid Systems, Inc. Screen Mesh Types			
Screen	d100 Opening $\mu\text{m}$	API Number	Conductance
FMS/MFX 50	409	40	9.1
FMS/MFX 80	249	60	4.7
FMS/MFX 100	198	70	5.0
FMS/MFX 120	146	100	2.4
FMS/MFX 145	119	120	2.0
FMS/MFX 180	95	170	1.6
FMS/MFX 200	86	170	1.5
FMS/MFX 250	66	230	1.0

## FMD SERIES



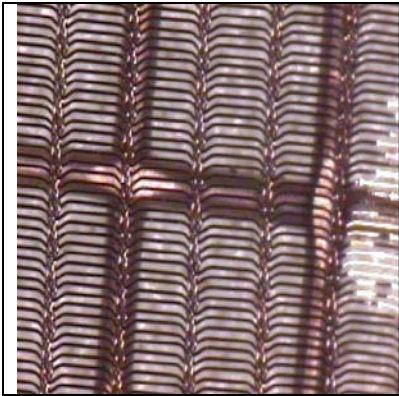
**FMD Series** screens utilize the two layers of ultra fine square mesh and one support layer with the addition of a perforated support plate and are available in mesh sizes from 24 to 250. The support plate offers extra support for heavy loading and reparability of damaged or worn sections of the screen panel. As with all Fluid Systems, Inc. O.E.M. screen panels, each screen is factory tensioned to eliminate improper tensioning in the field.

API RP 13C Screen Data			
Fluid Systems, Inc. Screen Mesh Types			
Screen	d100 Opening $\mu\text{m}$	API Number	Conductance
FMD 38	526	35	7.5
FMD 50	425	40	5.7
FMD 70	285	50	4.2
FMD 84	233	60	3.4
FMD 110	189	80	2.8
FMD 140	145	100	2.3
FMD 175	121	120	1.8
FMD 210	108	140	1.6
FMD 250	91	170	1.3

"State of the Art Solids Control Technology"

# SCREEN MESH STYLES

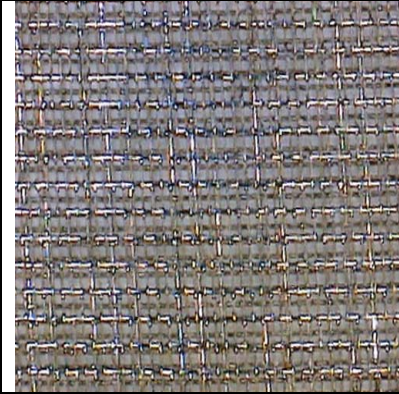
## RHC SERIES



**RHC Series** screens utilize a high capacity, rectangular weave which allows for higher flow rates than any other mesh currently available. The unique weave ensures wire stability for accurate separation and long service life. The RHC screen panel also utilizes the perforated support plate. This series of screen panels are available in mesh sizes from 80 to 250. As with all Fluid Systems, Inc. O.E.M. screen panels, each screen is factory tensioned to eliminate improper tensioning in the field.

API RP 13C Screen Data			
Fluid Systems, Inc. Screen Mesh Types			
Screen	d100 Opening $\mu\text{m}$	API Number	Conductance
RHC 80	270	60	7.6
RHC 100	229	70	5.9
RHC 150	167	80	4.2
RHC 170	138	100	2.9
RHC 200	142	100	2.8
RHC 250	119	120	2.3

## FMR SERIES



**FMR Series** screens utilize rectangular weave wire cloth that is layered in a de-blinding configuration. The FMR screen panel also utilizes the perforated support plate. This series of screen panels are available in mesh sizes from 84 to 250. As with all Fluid Systems, Inc. O.E.M. screen panels, each screen is factory tensioned to eliminate improper tensioning in the field.

API RP 13C Screen Data			
Fluid Systems, Inc. Screen Mesh Types			
Screen	d100 Opening $\mu\text{m}$	API Number	Conductance
FMR 84	244	60	4.1
FMR 110	206	70	3.2
FMR 140	177	80	2.3
FMR 175	141	100	2.1
FMR 210	123	120	1.8
FMR 230	104	140	1.6
FMR 250	92	170	1.4

"State of the Art Solids Control Technology"