

Series A50 B

Linear Power ReplaceAbed™



VGS Configuration Optional

Retro-fit competitors shaker beds

Introducing the A50 B ReplaceAbed™, FSI's latest advance in high "G" force, high volume linear motion retro-fit shaker beds. FSI has designed this unit to replace many competitor's shaker beds at a fraction of the cost of a new machine and achieve optimum performance. Even in the most challenging applications, the A50 B ReplaceAbed™ achieves consistently high throughput. Processing rates vary with slurry content, percent solids and viscosity.

Exceptional reliability

Simplicity is the essence of every FSI design. Permanently sealed vibrators make lubrication systems totally unnecessary. Low 80-dB motor vibration eliminates the need for hearing protection. Each of the unit's two pretensioned screen panels can be installed or replaced independently of each other. Replacement takes less than three minutes and requires only a light- to medium-weight hammer.

Lowest maintenance cost

Simplicity pays off. FSI equipment have the lowest operational and maintenance costs in the industry. Routine maintenance is extremely minimal. Simple visual checks of screen panels, deck rubbers, inflation of air spring assemblies, and quarterly torque checks of the vibrator motor bolts are all that is required. Fluid Systems, Inc. keeps you on-line for decades of trouble-free performance. It's that simple!



The FSI Difference

- **High "G" force**
- **16.9 ft² [1.57 m²] screening area**
- **Easy change-out design**
- **Rugged and reliable**
- **High performance**
- **Low maintenance**
- **Quick screen panel changes**
- **Little or no welding**
- **No lubrication**
- **Low noise**



www.FluidSystems.com

Houston Office

16619 Aldine Westfield Rd
Houston, TX 77032
832-467-9898
FAX: 832-467-9897

New Orleans Office

2808 Engineers Road
Belle Chasse, LA 70037
504-393-1804
FAX: 504-393-5166

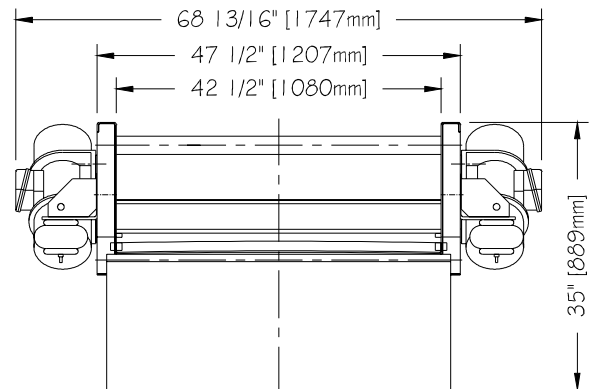
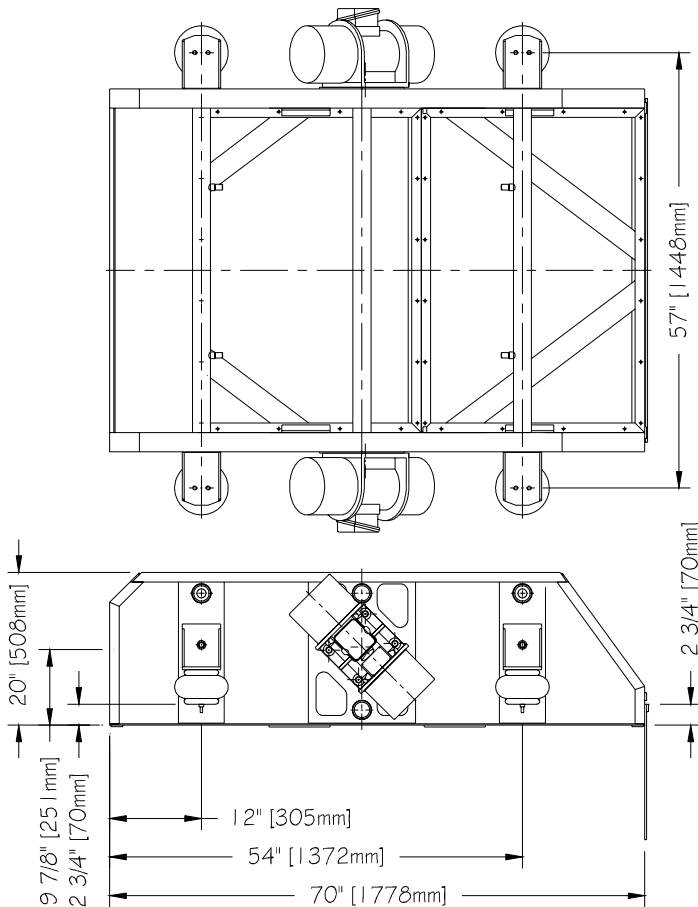
Series A50 B

Linear *Power ReplaceAbed*™



General Specifications

Series:	Series A50
Model:	B
Motors:	Two each 1200, 1500 or 1800 rpm exp. proof or non-exp. proof available
Bearings:	Permanently sealed and lubricated
Motion:	Linear; 0.23" A (1200), 0.156" (1500), 0.13" A (1800), 5.0 "G"
VGS:	Force adjustable to 7.0 "G" maximum
Deck adjustment:	Adjustable 0° to 5° uphill
Screens:	Two each 29" x 42" pretensioned panels with <i>Wedgelok</i> fasteners
Screening area:	16.9 ft ² [1.57 m ²]
Overall dimensions:	70" L x 68 7/8" W x 20" H 1778mm x 1747mm x 508mm



Fluid Systems, Inc.

Screen Sales, Manufacturing & Engineering

16619 Aldine Westfield Rd • Houston, TX 77032 • TEL 832-467-9898 • FAX 832-467-9898

Sales & Service

2808 Engineers Road • Belle Chasse, LA 70037 • TEL 504-393-1804 • FAX 504-393-5166

Sales@FluidSystems.com