

# Series 500/500 B

## Linear Power Cascade Unit



### **VGS Configuration Optional**

#### **High "G" force, high volume**

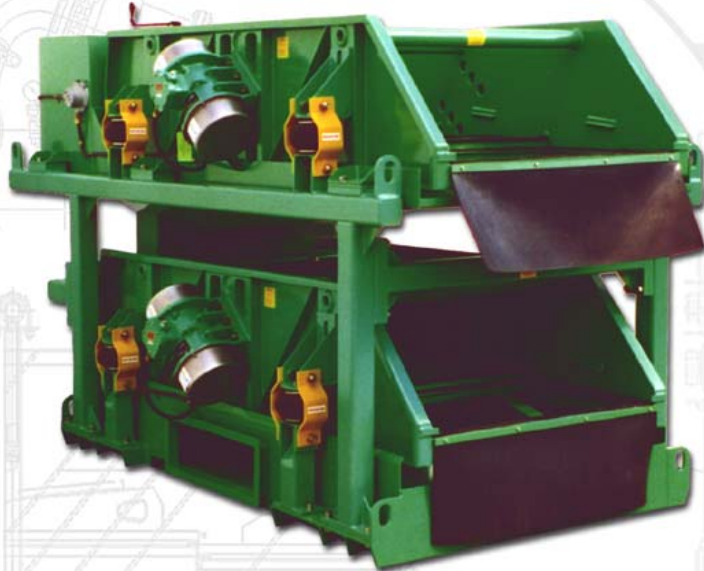
Introducing the 500/500 B, FSI's latest advance in high "G" force, high volume cascading systems. FSI has designed this unit to achieve optimum performance. Even in the most challenging applications, the 500/500 B achieves consistently high throughput. Processing rates vary with slurry content, percent solids and viscosity.

#### **Exceptional reliability**

Simplicity is the essence of every FSI design. Permanently sealed vibrators make lubrication systems totally unnecessary. Low 80-dB motor vibration eliminates the need for hearing protection. Each of the unit's six pre-tensioned screen panels can be installed or replaced independently of each other. Replacement takes less than five minutes and requires only a light to medium-weight hammer.

#### **Lowest Maintenance Cost**

FSI equipment have the lowest operational and maintenance costs in the industry. Routine maintenance is extremely minimal. Simple visual checks of screen panels, deck rubbers, inflation of air spring assemblies and quarterly torque checks of the vibrator motor bolts are all that is required. Fluid Systems, Inc. keeps you on-line for decades of trouble-free performance. It's that simple.



## The FSI Difference

- **High "G" Force**
- **50.8 ft<sup>2</sup> [4.72 m<sup>2</sup>] screening area**
- **Simple design**
- **Rugged and reliable**
- **High performance**
- **Low maintenance**
- **Quick screen panel changes**
- **Small footprint**
- **No lubrication**
- **Low noise**



[www.FluidSystems.com](http://www.FluidSystems.com)

### **Houston Office**

16619 Aldine Westfield Rd.  
Houston, TX 77032  
832-467-9898  
FAX: 832-467-9897

### **New Orleans Office**

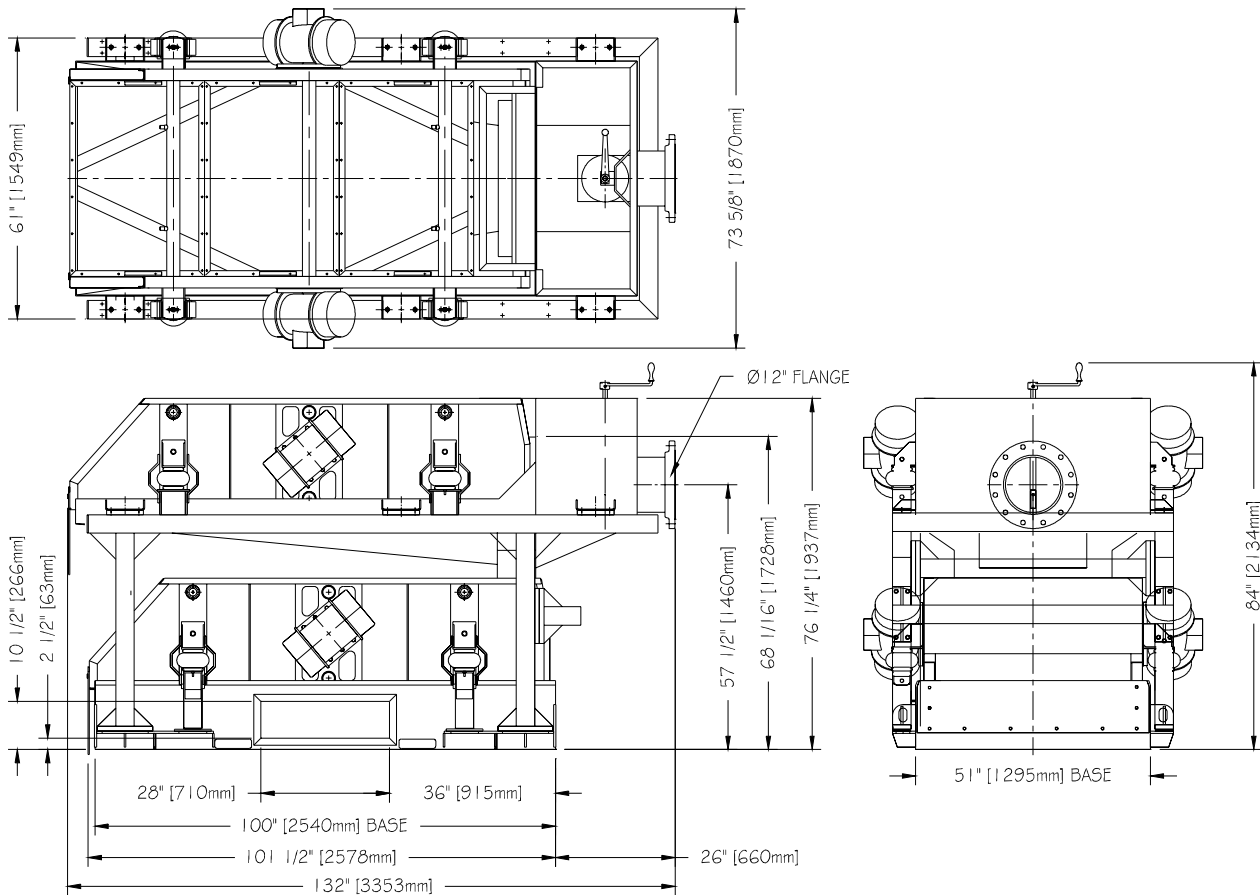
2808 Engineers Road  
Belle Chasse, LA 70037  
504-393-1804  
FAX: 504-393-5166

# Series 500/500 B Linear *Power* Cascade Unit



## General Specifications

Series:	Series 500/500
Model:	B
Motors:	Four each 1800, 1500 or 1200 rpm exp. proof or non-exp. proof available
Bearings:	Permanently sealed and lubricated
Motion:	Linear; 0.13" A (1800), 0.156" A (1500), 0.23" A (1200), 4.5 "G"
VGS:	Force adjustable to 8.0 "G" maximum
Deck adjustment:	Adjustable 0° to 5° uphill
Screens:	Six each 29" x 42" pretensioned panels with <i>Wedgelok</i> fasteners
Screening area:	50.8 ft <sup>2</sup> [4.72 m <sup>2</sup> ]
Overall dimensions:	132" L x 73 5/8" W x 84" H 3353mm x 1870mm x 2134mm



**Fluid Systems, Inc.**

**Screen Sales, Manufacturing & Engineering**

16619AldineWestfield • Houston, TX 77032 • TEL 832-467-9898 • FAX 832-467-9897

**Sales & Service**

2808 Engineers Road • Belle Chasse, LA 70037 • TEL 504-393-1804 • FAX 504-393-5166

Sales@FluidSystems.com • Engineering@FluidSystems.com • Screens@FluidSystems.com • Service@FluidSystems.com