

3642 rePROCESSOR™

Linear Power Shaker



VGS Configuration Optional

High “G” force, high volume

Introducing the 3642 rePROCESSOR™, FSI's latest advance in high “G” force, high volume linear motion shakers. FSI has designed this unit to achieve optimum performance. Even in the most challenging applications, the rePROCESSOR™ achieves consistently high throughput. Processing rates vary with slurry content, percent solids and viscosity.

Exceptional reliability

Simplicity is the essence of every FSI design. Permanently sealed vibrators make lubrication systems totally unnecessary. Low 75-dB motor vibration eliminates the need for hearing protection. Each of the unit's two pre-tensioned screen panels can be installed or replaced independently of each other. Replacement takes less than three minutes and requires only a light to medium-weight hammer.

Lowest maintenance cost

Simplicity pays off. FSI equipment have the lowest operational and maintenance costs in the industry. Routine maintenance is extremely minimal. Simple visual checks of screen panels, deck rubbers, inflation of air spring assemblies, and quarterly torque checks of the vibrator motor bolts are all that is required. Fluid Systems, Inc. keeps you on-line for decades of trouble-free performance. It's that simple!

The FSI Difference

- **Low Noise - Under 90 dB**
- **Quick Screen Panel Changes**
- **No Lubrication**
- **Low Maintenance**
- **High “G” Force**
- **Balanced Linear Motion**
- **Rugged and Reliable**
- **High Performance**
- **Small Footprint**



www.FluidSystems.com

Houston Office

16619 Aldine Westfield Rd
Houston, TX 77032
832-467-9898
FAX: 832-467-9897

New Orleans Office

2808 Engineers Road
Belle Chasse, LA 70037
504-393-1804
FAX: 504-393-5166

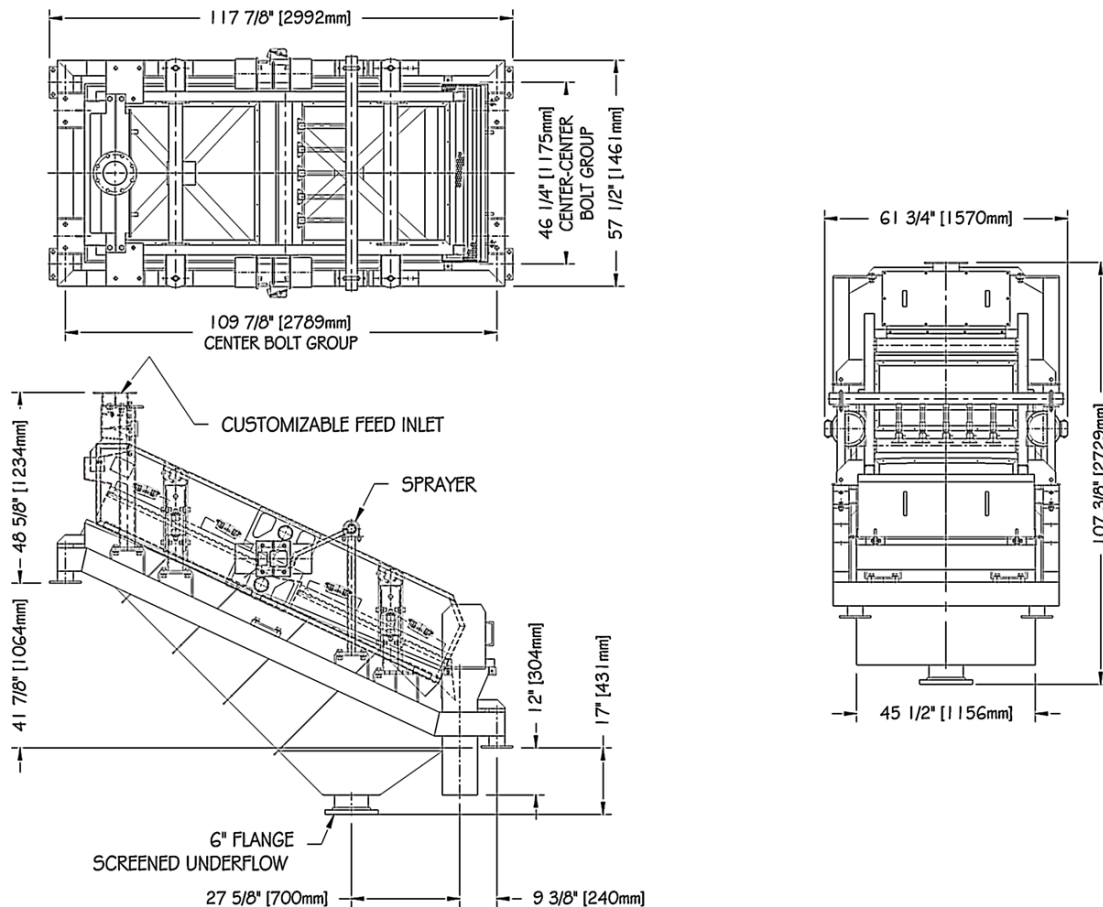
3642 rePROCESSOR™

Linear Power Shaker



General Specifications

Series:	3642
Model:	RPU
Motors:	Two each 1800 or 1500 rpm exp. proof or non-exp. proof available
Bearings:	Permanently sealed and lubricated
Motion:	Linear, 0.13" A (1800), 0.156" A (1500), 4.5 "G"
VGS:	Force adjustable to 7.0 "G" maximum
Screens:	Two each 36" x 42" pretensioned panels with <i>Wedgelok</i> ™ fasteners
Screening area:	21 ft ² [1.95 m ²]
Overall dimensions:	117 ⁷ / ₈ " L x 57 ¹ / ₂ " W x 107 ³ / ₈ " H 2992mm x 1461mm x 2729mm



Fluid Systems, Inc.

Screen Sales, Manufacturing & Engineering

16619AldineWestfield Rd • Houston, TX 770 • TEL 832-467-9898 • FAX 832-467-9897

Sales & Service

2808 Engineers Road • Belle Chasse, LA 70037 • TEL 504-393-1804 • FAX 504-393-5166

Sales@FluidSystems.com