

# Series 3642 TFL

## Linear Power Shaker



### **VGS Configuration Optional**

#### **High speed, high volume**

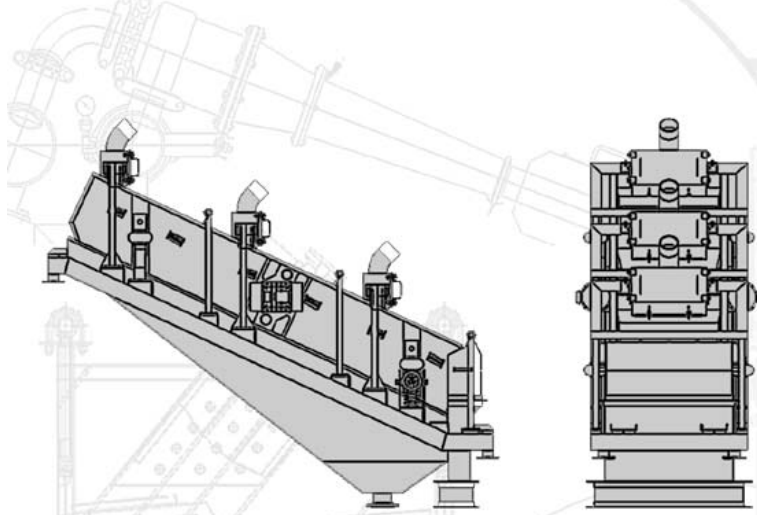
Introducing the 3642 TFL, FSI's latest advance in high "G" force, high volume linear motion shakers. FSI has designed this unit to achieve optimum performance. Even in the most challenging applications, the 3642 TFL achieves consistently high throughput. Processing rates vary with slurry content, percent solids and viscosity.

#### **Exceptional reliability**

Simplicity is the essence of every FSI design. Permanently sealed vibrators make lubrication systems totally unnecessary. Low 80-dB motor vibration eliminates the need for hearing protection. Each of the unit's two pretensioned screen panels can be installed or replaced independently of each other. Replacement takes less than five minutes and requires only a light to medium-weight hammer.

#### **Lowest maintenance cost**

Simplicity pays off. FSI equipment have the lowest operational and maintenance costs in the industry. Routine maintenance is extremely minimal. Simple visual checks of screen panels, deck rubbers, inflation of air spring assemblies, and quarterly torque checks of the vibrator motor bolts are all that is required. Fluid Systems, Inc. keeps you on-line for decades of trouble-free performance. It's that simple!



## The FSI Difference

- **High "G" Force**
- **Simple design**
- **Rugged and reliable**
- **High performance**
- **Low maintenance**
- **Quick screen panel changes**
- **Small footprint**
- **No lubrication**
- **31.5 ft<sup>2</sup> screening area**
- **Low noise**



[www.Fluidsystems.com](http://www.Fluidsystems.com)

### **Houston Office**

16619 Aldine Westfield Rd  
Houston, TX 77032  
832-467-9898  
FAX: 832-467-9897

### **New Orleans Office**

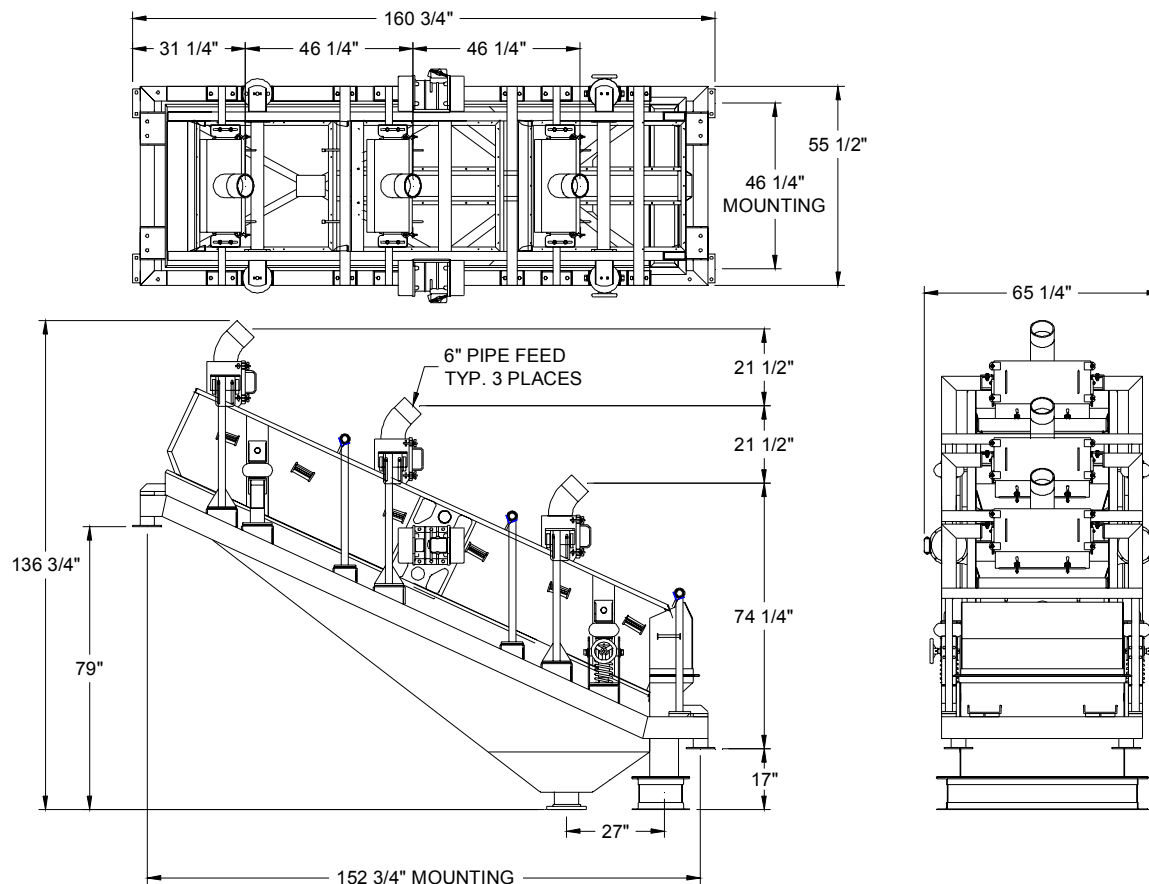
2808 Engineers Road  
Belle Chasse, LA 70037  
504-393-1804  
FAX: 504-393-5166

# Series 3642 TFL Linear *Power* Shaker



## General Specifications

Series:	Series 3642
Model:	TFL
Motors:	Two each 1800 RPM to 2500 RPM
Bearings:	Permanently sealed and lubricated
Motion:	Linear, 0.03" to 0.13" A
VGS:	Force adjustable to 6.5 "G" maximum
Deck adjustment:	Adjustable 0° to 5° uphill
Screens:	Three each 36" x 42" pretensioned panels with <i>Wedgelok</i> fasteners
Screening area:	31.5 sq. ft.
Overall dimensions:	160 3/4" L x 61 3/4" W x 136 3/4" H



**Fluid Systems, Inc.**

**Screen Sales, Manufacturing & Engineering**

16619 AldineWestfield Rd • Houston, TX 77032 • TEL 832-467-9898 • FAX 832-467-9897

**Sales & Service**

2808 Engineers Road • Belle Chasse, LA 70037 • TEL 504-393-1804 • FAX 504-393-5166

sales@fluidsystems.com